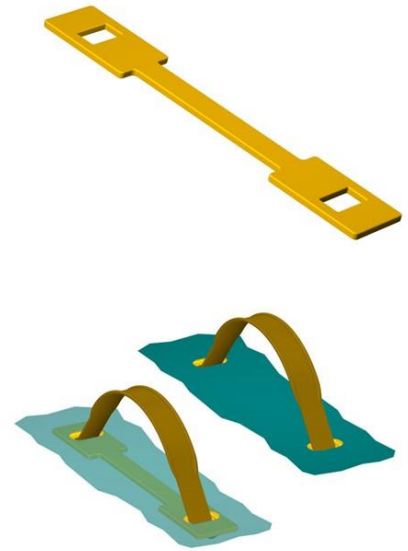




## Data sheet EKS 991.1 Reinforcing plate

Our Reinforcing plate EKS 991.1

- supports the cardboard box wall
- prevents the tearing of cardboard at the position of the punchings when mounting the handle
- is particularly designed for the handle EKS 175.0
- manufactured in black as a standard
- is part of our E-K-S Bioline®
- 100% recyclable



### Technical specification:

Weight approx. 4.70 gr.

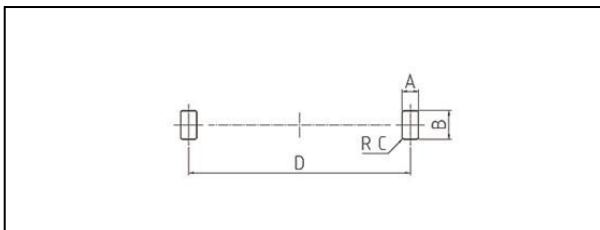
Raw material depending on the variant:

- 100% PP-Recycled material (PCR)
- 100% E-K-S Bioline® sugar cane

### Packaging:

500 pcs. / 3.0 kg  
1,500 pcs. / 8.5 kg  
5,000 pcs. / 26.7 kg

### Assembling data:



Assembling data  
(punching)

A = 8 mm (+/-1mm)  
B = 14 mm (+/-1mm)  
C = 1 mm (+/-1mm)  
D = 110 mm (+/-1mm)



Did you already know that we can also manufacture our products from biological raw materials on request? We will be pleased to provide you with further information!

