



## Data sheet EKS 967.0 Tongue handle

Our Tongue handle EKS 967.0

- is locked in the package through the tongues that act as barbs
- is used only for packages with thin walls
- can be inserted into knife cuts
- is similar to the longer handle EKS 666.0
- can be loaded up to 8 kg
- is part of our E-K-S Bioline®
- 100% recyclable



### Technical specification:

Weight approx. 2.20 gr.

Raw material depending on the variant:

- 70% HDPE (standard material) / 30 % HDPE regranulate (PIR)
- 100% E-K-S Bioline® sugar cane

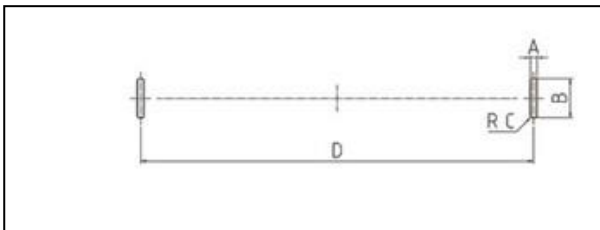
### Packaging:

1,000 pcs. / 2.5 kg

2,000 pcs. / 5.0 kg

8,000 pcs. / 18.8 kg

### Assembling data:



Assembling data  
(punching)

A = 3 mm (+/-1mm)

B = 16 mm (+/-1mm)

C = 1 mm (+/-1mm)

D = 125 mm (+/-1mm)



Did you already know that we can also manufacture our products from biological raw materials on request? We will be pleased to provide you with further information!