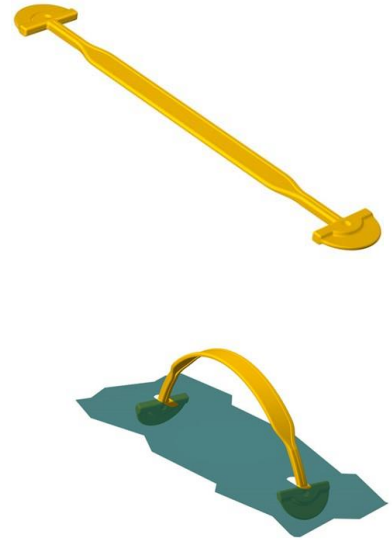




Data sheet EKS 964.0 Carrying handle

Our Carrying handle EKS 964.0

- possesses rounded handle edges
- can be mounted easily
- can also be combined with the reinforcing plates EKS 165.6, EKS 991.0 and reinforcing rings EKS 607.0
- is similar to the shorter Carrying handle EKS 764.0
- can be loaded up to 10 kg or 20 kg depending on the material used
- is part of our E-K-S Bioline®
- 100% recyclable



Technical specification:

Weight approx. 3.40 gr.

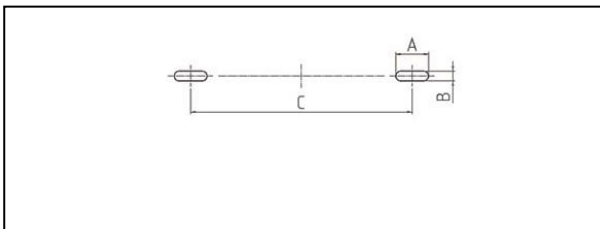
Raw material depending on the variant:

- 70% LDPE (standard material) / 30 % LDPE regranulate (PIR)
- 70% HDPE (standard material) / 30 % HDPE regranulate (PIR)
- 100% E-K-S Bioline® sugar cane

Packaging:

1,000 pcs. / 3.6 kg
2,000 pcs. / 7.2 kg
6,000 pcs. / 21.0 kg
7,000 pcs. / 24.3 kg

Assembling data:



Assembling data
(punching)

A = 17 mm (+/-1mm)
B = 5 mm (+/-1mm)
C = 125 mm (+/-1mm)



Did you already know that we can also manufacture our products from biological raw materials on request? We will be pleased to provide you with further information!

