



Data sheet EKS 923.0 Case handle

Our Case handle EKS 923.0

- has an optically attractive design
- is preferably used for presentation packages
- has a swivelling handle part
- offers high carrying comfort
- can be mounted quickly because of its snap connections
- is lighter than the case handle EKS 921.0 because of the ribs
- is often used in combination with the case lock EKS 922.0
- can be loaded up to 8 kg
- is part of our E-K-S Bioline®
- 100% recyclable



Technical specification:

Weight approx. 11.20 gr.

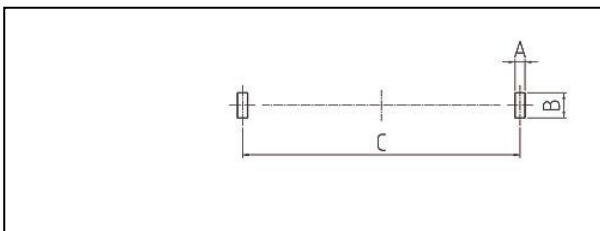
Raw material depending on the variant:

- 70% HDPE (standard material) / 30 % HDPE regranulate (PIR)
- 100% E-K-S Bioline® sugar cane

Packaging:

100 pcs. / 1.6 kg
400 pcs. / 5.2 kg
1,500 pcs. / 18.1 kg

Assembling data:



Assembling data
(punching)

A = 4 mm (+/-1mm)
B = 10 mm (+/-1mm)
C = 111 mm (+/-1mm)



Did you already know that we can also manufacture our products from biological raw materials on request? We will be pleased to provide you with further information!

