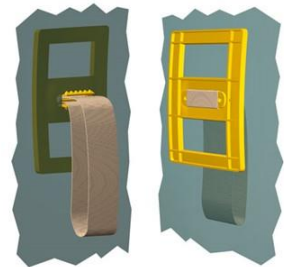




Data sheet EKS 885.0 Loop handle

Our Loop handle EKS 885.0

- is equipped with a flexible textile loop
- possesses a robust plastic plate
- is used for carrying and lateral drawing of bulky packages
- possesses sturdy barbs so that the plate is anchored in the cardboard box wall
- can be mounted on the side or top of a box
- is an alternative to the Loop handles EKS 887.0 and EKS 889.7
- can be loaded up to 75 kg
- is part of our E-K-S Bioline®
- 100% recyclable



Technical specification:

Weight approx. 39.00 gr.

Raw material depending on the variant:

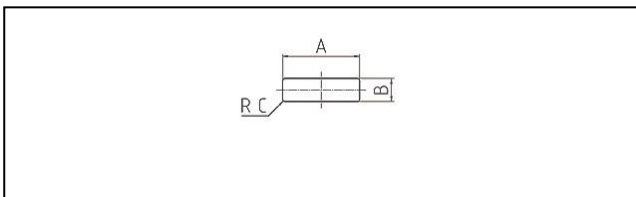
- 70% HDPE (standard material) / 30 % HDPE regranulate (PIR)
- 100% E-K-S Bioline® sugar cane

Packaging:

100 pcs. / 4.5 kg

400 pcs. / 15.0 kg

Assembling data:



Assembling data
(punching)

A = 37 mm (+/-1mm)

B = 11 mm (+/-1mm)

C = 1 mm (+/-1mm)



Did you already know that we can also manufacture our products from biological raw materials on request? We will be pleased to provide you with further information!

