



Data sheet EKS 882.2 Reinforcing plate

Our Reinforcing plate EKS 882.2

- stabilizes the cardboard box wall
- prevents tearing of the package
- is suitable for cardboard boxes with wall thicknesses from 4 mm up to 6 mm
- is designed to be used in combination with handle EKS 882.0
- is available premounted with the handle EKS 882.0 (EKS 882.3)
- is part of our E-K-S Bioline®
- 100% recyclable



Technical specification:

Weight approx. 9.80 gr.

Raw material depending on the variant:

- 70% PS (standard material) / 30 % PS regranulate (PIR)
- 100% E-K-S Bioline® sugar cane

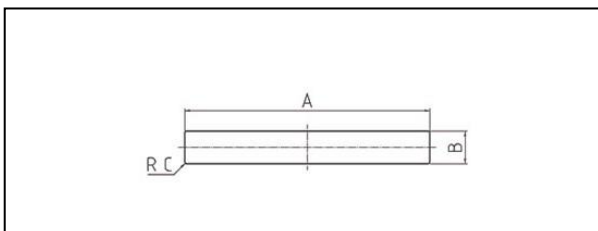
Packaging:

500 pcs. / 5.5 kg

700 pcs. / 8.1 kg

1,250 pcs. / 13.5 kg

Assembling data:



Assembling data
(punching)

A = 124 mm (+/-1mm)

B = 24 mm (+/-1mm)

C = 1 mm (+/-1mm)



Did you already know that we can also manufacture our products from biological raw materials on request? We will be pleased to provide you with further information!

