

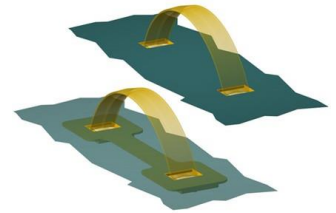


Data sheet

EKS 882.1 Reinforcing plate

Our Reinforcing plate EKS 882.1

- is used for reinforcing the cardboard box wall
- prevents tearing of the package
- is to be used in combination with the handle EKS 882.0 exclusively
- is part of our E-K-S Bioline®
- 100% recyclable



Technical specification:

Weight approx. 7.00 gr.

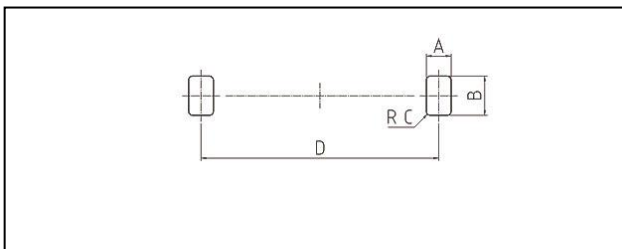
Raw material depending on the variant:

- 70% HDPE (standard material) / 30 % HDPE regranulate (PIR)
- 100% E-K-S Bioline® sugar cane

Packaging:

500 pcs. / 4.1 kg
2,500 pcs. / 18.7 kg

Assembling data:



Assembling data
(punching)

- A = 12 mm (+-1mm)
- B = 19 mm (+-1mm)
- C = 2 mm (+-1mm)
- D = 112 mm (+-1mm)



Did you already know that we can also manufacture our products from biological raw materials on request? We will be pleased to provide you with further information!

