

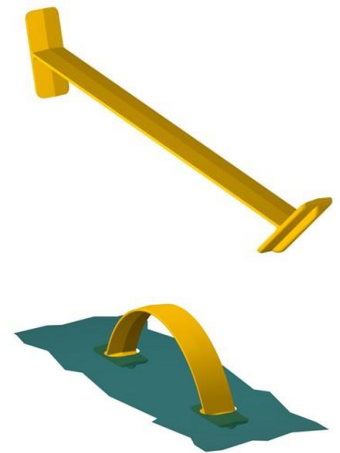


Data sheet

EKS 882.0 Heavy lift handle

Our Heavy lift handle EKS 882.0

- can easily be inserted into the punchings of the package due to its tilt ends
- offers an optically appealing fit because the punchings can surround the handle closely
- can be used in combination with the reinforcing plates EKS 882.1 and EKS 882.2
- has a more solid design than handle EKS 175.0
- can be purchased preassembled in combination with the reinforcing plate EKS 882.2 (EKS 882.3)
- can be loaded up to 35 kg
- is part of our E-K-S Bioline®
- 100% recyclable



Technical specification:

Weight approx. 8.90 gr.

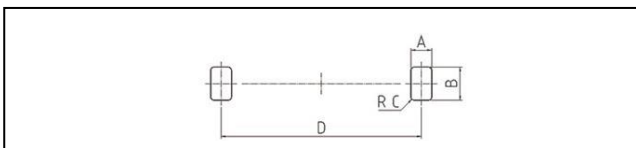
Raw material depending on the variant:

- 70% LDPE (standard material) / 30 % LDPE regranulate (PIR)
- 100% E-K-S Bioline® sugar cane

Packaging:

500 pcs. / 5.1 kg
1,000 pcs. / 12.4 kg
3,000 pcs. / 14.6 kg

Assembling data:



Assembling data
(punching)

A = 12 mm (+1mm)
B = 19 mm (+1mm)
C = 2 mm (+1mm)
D = 115 mm (+1mm)



Did you already know that we can also manufacture our products from biological raw materials on request? We will be pleased to provide you with further information!

