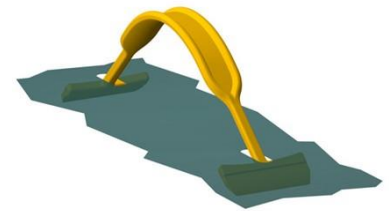




Data sheet EKS 865.0 Carrying handle

Our Carrying handle EKS 865.0

- offers high carrying comfort through its profiled middle part
- stands out by its wide handle ends
- can also be combined with the reinforcing plate EKS 991.0 and reinforcing rings EKS 607.0
- due to its oval cross-sections of the handle runouts it can be inserted into the reinforcing plate EKS 165.6 in a twist-safe manner
- can be loaded up to 12 kg or 21 kg depending on the material used
- is part of our E-K-S Bioline®
- 100% recyclable



Technical specification:

Weight approx. 6.0 gr.

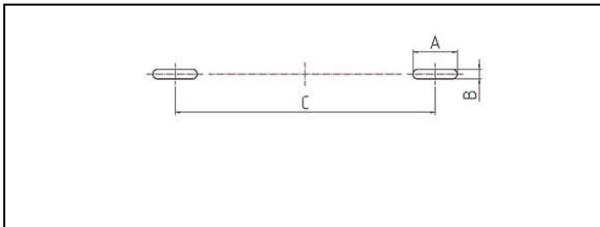
Raw material depending on the variant:

- 70% LDPE (standard material) / 30 % LDPE regranulate (PIR)
- 70% HDPE (standard material) / 30 % LDPE regranulate (PIR)
- 100% E-K-S Bioline® sugar cane

Packaging:

1,000 pcs. / 6.4 kg
3,000 pcs. / 18.6 kg

Assembling data:



Assembling data
(punching)

A = 23 mm (+/-1mm)
B = 5 mm (+/-1mm)
C = 135 mm (+/-1mm)



Did you already know that we can also manufacture our products from biological raw materials on request? We will be pleased to provide you with further information!

