

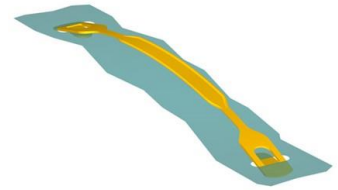


Data sheet

EKS 666.0 Tongue handle

Our Tongue handle EKS 666.0

- is locked in the package through the tongues that act as barbs
- is used only for packages with thin walls
- can be inserted into knife cuts
- is similar to the shorter handle EKS 967.0
- can be loaded up to 5 kg or 7 kg depending on the material used
- is part of our E-K-S Bioline®
- 100% recyclable



Technical specification:

Weight approx. 2.90 gr.

Raw material depending on the variant:

- 70% LDPE (standard material) / 30 % LDPE regranulate (PIR)
- 70% HDPE (standard material) / 30 % HDPE regranulate (PIR)
- 100% E-K-S Bioline® sugar cane

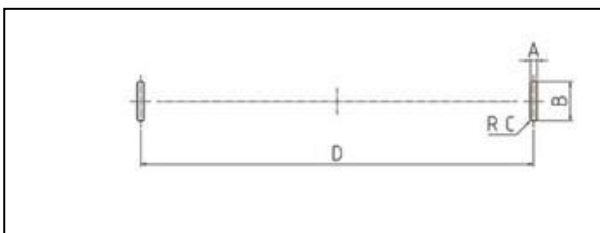
Packaging:

1,000 pcs. / 3.0 kg

2,000 pcs. / 6.0 kg

8,000 pcs. / 22.8 kg

Assembling data:



Assembling data
(punching)

A = 3 mm (+-1mm)

B = 17 mm (+-1mm)

C = 1 mm (+-1mm)

D = 180 mm (+-1mm)



Did you already know that we can also manufacture our products from biological raw materials on request? We will be pleased to provide you with further information!

