

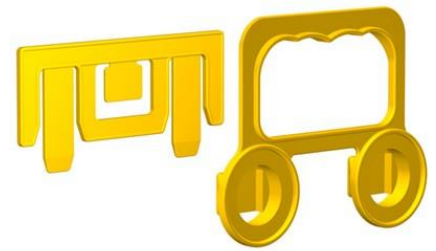


## Data sheet

# EKS 598.3 Heavy duty handle

Our Heavy duty handle EKS 598.3

- is suitable for packages with wall thicknesses of up to 16 mm
- due to the assembly in a double hole the handle can be used to turn or tilt the cardboard packaging
- wears out only slightly on the outside and inside
- stabilizes the cardboard wall
- is mounted on two opposite sides
- can be mounted quickly
- can be loaded up to 75 kg
- is part of our E-K-S Bioline®
- 100% recyclable



### Technical specification:

Weight approx. 39.90 gr.

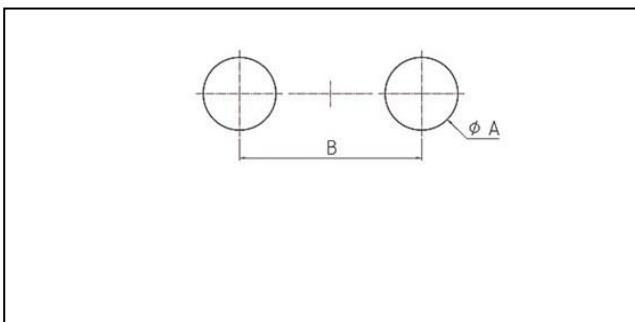
Raw material depending on the variant:

- 70% HDPE (standard material) / 30 % HDPE regranulate (PIR)
- 100% E-K-S Bioline® sugar cane

### Packaging:

200 pcs. / 9.2 kg

### Assembling data:



Assembling data  
(punching)

A = 34 mm (+-1mm)

B = 85 mm (+-1mm)



Did you already know that we can also manufacture our products from biological raw materials on request? We will be pleased to provide you with further information!

