

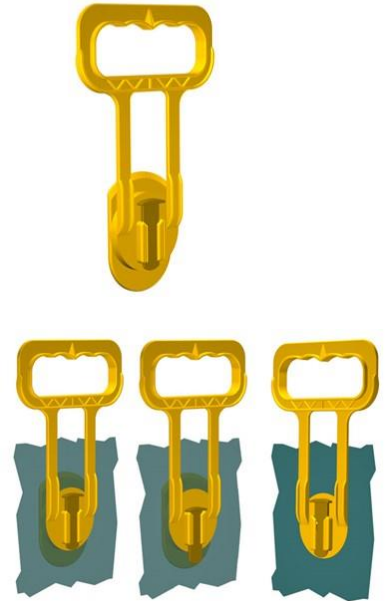


## Data sheet

# EKS 594.0 Reusable heavy lift handle

Our Reusable heavy lift handle EKS 594.0

- is suitable for cardboard boxes with wall thicknesses from 5 mm up to 7 mm
- wears out only slightly on the inside
- can be turned into the ergonomically most favorable handle position
- is generally mounted on two opposite sides
- can be mounted on already closed packages
- can be mounted very fast, dismantled without being destroyed and thus be reused
- can be loaded up to 75 kg
- is part of our E-K-S Bioline®
- 100% recyclable



### Technical specification:

Weight approx. 26.70 gr.

Raw material depending on the variant:

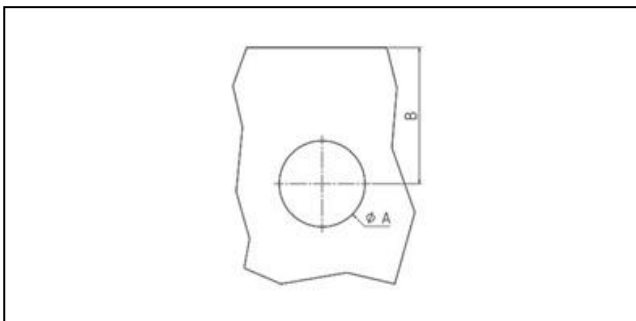
- 70% HDPE (standard material) / 30 % HDPE regranulate (PIR)
- 100% E-K-S Bioline® sugar cane

### Packaging:

100 pcs. / 3.3 kg

400 pcs. / 11.9 kg

### Assembling data:



Assembling data  
(punching)

A = 50 mm (+/-1mm)

B = 90 mm (+/-1mm)



Did you already know that we can also manufacture our products from biological raw materials on request? We will be pleased to provide you with further information!

