



## Data sheet EKS 572.5 Heavy duty handle

Our Heavy duty handle EKS 572.5

- is suitable for cardboard boxes with wall thicknesses from 9 mm up to 17 mm
- is delivered in pairs with the thread cap EKS 572.8
- can be turned into the ergonomically most favorable handle position
- wears out only slightly on the outside
- is connected with the cardboard box by screwing together both handle parts and stabilizes the cardboard wall
- is generally mounted on two opposite sides
- possesses a longer screw neck part compared to handle EKS 572.2
- can be loaded up to 75 kg
- is part of our E-K-S Bioline®
- 100% recyclable



### Technical specification:

Weight approx. 51.30 gr.

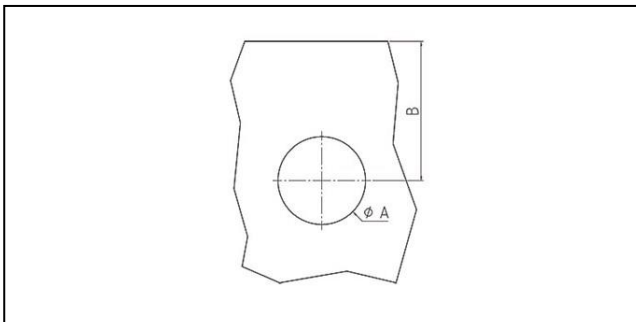
Raw material depending on the variant:

- 70% HDPE (standard material) / 30 % HDPE regranulate (PIR)
- 100% E-K-S Bioline® sugar cane

### Packaging:

150 pcs. / 8.9 kg

### Assembling data:



Assembling data  
(punching)

A = 50 mm (+/-1mm)  
B = 85 mm (+/-1mm)



Did you already know that we can also manufacture our products from biological raw materials on request? We will be pleased to provide you with further information!

