



Data sheet

EKS 572.3 Heavy duty handle

Our Heavy duty handle EKS 572.3

- is suitable for cardboard boxes with wall thicknesses from 13 mm up to 17 mm
- is delivered in pairs with screw neck EKS 574.8
- can be turned into the ergonomically most favorable handle position
- wears out only slightly on the inside
- is connected with the cardboard box by screwing together both handle parts and stabilizes the cardboard wall
- is generally mounted on two opposite sides
- possesses a shorter handle part compared to handles EKS 572.4 and EKS 572.5
- can be loaded up to 75 kg
- is part of our E-K-S Bioline®
- 100% recyclable



Technical specification:

Weight approx. 41.50 gr.

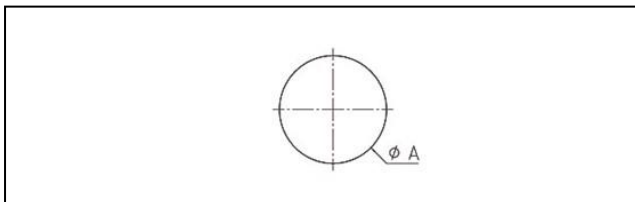
Raw material depending on the variant:

- 70% HDPE (standard material) / 30 % HDPE regranulate (PIR)
- 100% E-K-S Bioline® sugar cane

Packaging:

200 pcs. / 9.8 kg

Assembling data:



Assembling data
(punching)

A = 50 mm (+-1mm)



Did you already know that we can also manufacture our products from biological raw materials on request? We will be pleased to provide you with further information!

