

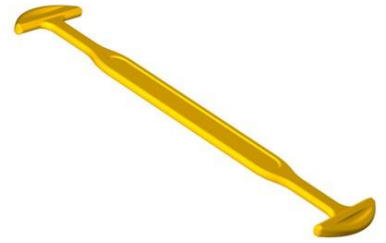


Data sheet

EKS 385.5 Heavy lift handle / Heavy duty handle

Our Heavy lift handle / Heavy duty handle EKS 385.5

- stands out through its high stability
- includes a blank field to be labeled customized for a small additional charge
- offers high carrying comfort due to its strongly rounded edges
- can also be combined with the reinforcing plate EKS 385.1
- can be loaded up to 35 kg or 55 kg depending on the material used
- is part of our E-K-S Bioline®
- 100% recyclable



Technical specification:

Weight approx. 10.30 gr.

Raw material depending on the variant:

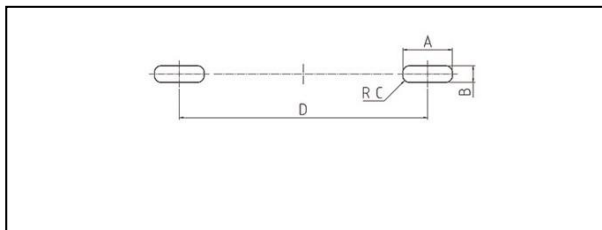
- 70% LDPE (standard material) / 30 % LDPE regranulate (PIR)
- 70% HDPE (standard material) / 30 % LDPE regranulate (PIR)
- 100% E-K-S Bioline® sugar cane

Packaging:

500 pcs. / 6.4 kg

2,000 pcs. / 23.7 kg

Assembling data:



Assembling data
(punching)

A = 30 mm (+/-1mm)

B = 10 mm (+/-1mm)

C = 4 mm (+/-1mm)

D = 150 mm (+/-1mm)



Did you already know that we can also manufacture our products from biological raw materials on request? We will be pleased to provide you with further information!

