



## Data sheet EKS 2884.0 Loop handle

Our Loop handle EKS 2884.0

- is equipped with a flexible textile loop
- possesses a robust plastic plate
- is used for carrying and lateral drawing of bulky packages
- can be mounted on the side or top of a box
- is an alternative to the Loop handles EKS 885.0, EKS 887.0 and EKS 889.7
- can be loaded up to 75 kg

### Technical specification:

Weight approx. 25.80 gr.

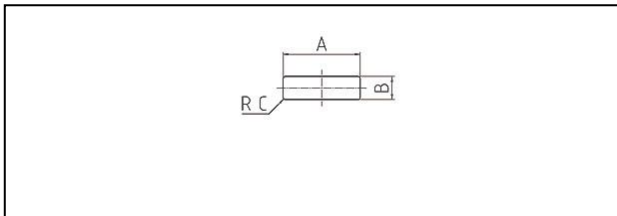
Raw material depending on the variant:

- PE/ textile

### Packaging:

500 pcs. / 14.1 kg

### Assembling data:

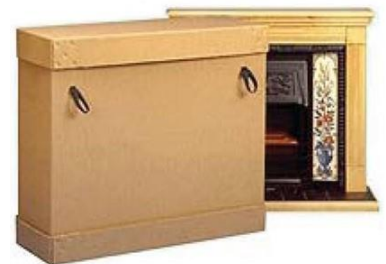


Assembling data  
(punching)

A = 32 mm (+-1mm)

B = 11 mm (+-1mm)

C = 1 mm (+-1mm)



Did you already know that we can also manufacture our products from biological raw materials on request? We will be pleased to provide you with further information!

