

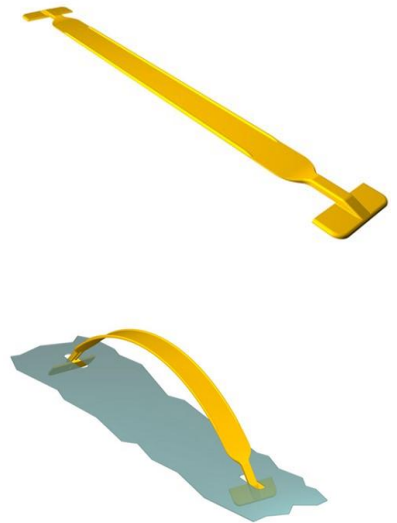


## Data Sheet

# EKS 281.0 Basket handle / Carrying handle

Our Basket handle / Carrying handle EKS 281.0

- is used both for chipboard and corrugated cardboard baskets for fruit and vegetable as well as on most diverse cardboard box packages
- is often an alternative to carrying handles EKS 170.0, EKS 601.0 and EKS 974.0
- can also be combined with the reinforcing rings EKS 607.0
- is mounted on packages mostly laterally
- can be loaded up to 18 kg
- is part of our E-K-S Bioline®
- 100% recyclable



### Technical specification:

Weight approx. 10.20 gr.

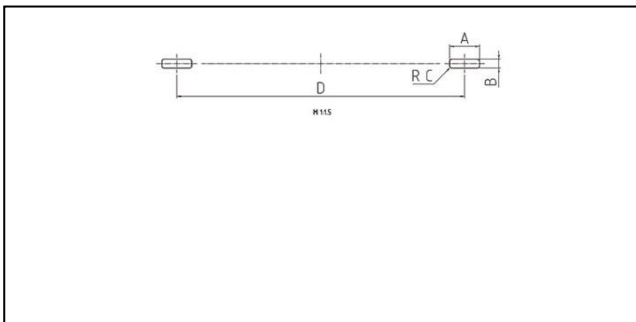
Raw material depending on the variant:

- 70% LDPE (standard material) / 30 % LDPE regranulate (PIR)
- 100% E-K-S Bioline® sugar cane

### Packaging:

500 pcs. / 5.7 kg  
2,000 pcs. / 21.6 kg

### Assembling data:



Assembling data  
(punching)

A = 27 mm (+-1mm)  
 B = 8 mm (+-1mm)  
 C = 2 mm (+-1mm)  
 D = 260 mm (+-1mm)



Did you already know that we can also manufacture our products from biological raw materials on request? We will be pleased to provide you with further information!

