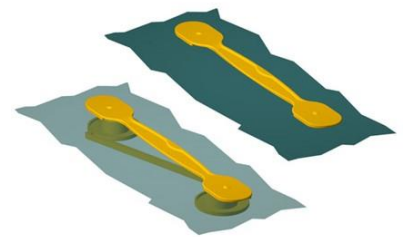




## Data sheet EKS 275.1 Carrying handle

Our Carrying handle EKS 275.1

- supports the package wall around the punchings
- is used for cardboard boxes with wall thicknesses up to 16 mm
- offers high carrying safety
- combines an appealing design with a sophisticated mounting technique
- can be loaded up to 25 kg
- is part of our E-K-S Bioline®
- 100% recyclable



### Technical specification:

Weight approx. 12.10 gr.

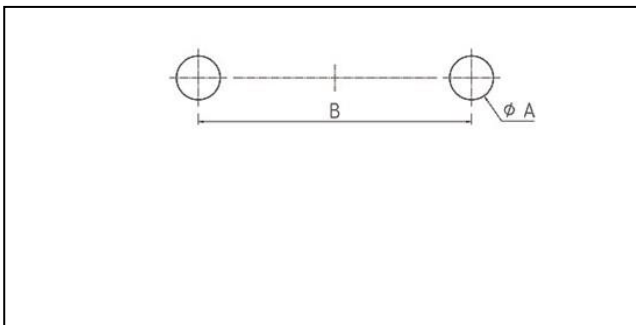
Raw material depending on the variant:

- 70% HDPE (standard material) / 30 % HDPE regranulate (PIR)
- 100% E-K-S Bioline® sugar cane

### Packaging:

1,000 pcs. / 13.3 kg

### Assembling data:



Assembling data  
(punching)

A = 20 mm (+/-1mm)  
B = 125 mm (+/-1mm)



Did you already know that we can also manufacture our products from biological raw materials on request? We will be pleased to provide you with further information!

