



## Data sheet

# EKS 200.3 Heavy duty handle

Our Heavy duty handle EKS 200.3

- is suitable for cardboard boxes with wall thicknesses from 12 mm up to 16 mm
- wears out only slightly on the outside and inside
- can be turned into the most favorable handle position from an ergonomic point of view
- is mounted on two opposite sides
- can be mounted quickly because it consists of one piece only
- can be mounted on package already closed
- can be loaded up to 55 kg
- is part of our E-K-S Bioline®
- 100% recyclable



### Technical specification:

Weight approx. 39.40 gr.

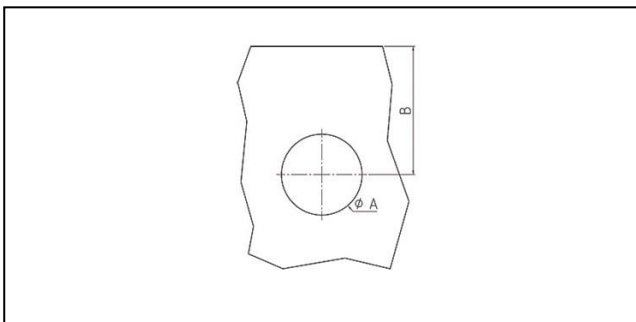
Raw material depending on the variant:

- 70% PP (standard material) / 30 % PP regranulate (PIR)
- 100% E-K-S Bioline® sugar cane

### Packaging:

150 pcs. / 7.2 kg

### Assembling data:



Assembling data  
(punching)

A = 50 mm (+-1mm)  
B = 100 mm (+-1mm)



Did you already know that we can also manufacture our products from biological raw materials on request? We will be pleased to provide you with further information!

