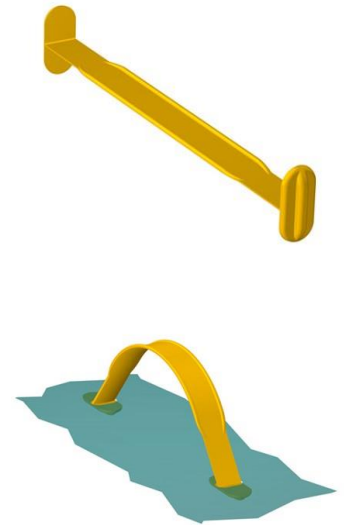




Data sheet EKS 175.0 Carrying handle

Our Carrying handle EKS 175.0

- can easily be inserted into the punchings of the package due to its tilt ends
- can also be combined with the reinforcing plate EKS 991.1
- offers an optically appealing fit because the punchings can surround the handle closely
- is of a lighter design than handle EKS 882.0
- can be loaded up to 12 kg
- is part of our E-K-S Bioline®
- 100% recyclable



Technical specification:

Weight approx. 3.80 gr.

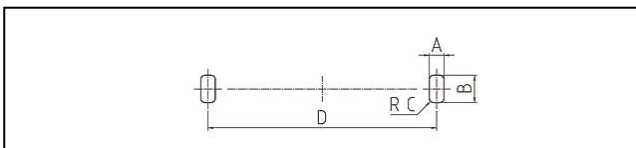
Raw material depending on the variant:

- 70% LDPE (standard material) / 30 % LDPE regranulate (PIR)
- 100% E-K-S Bioline® sugar cane

Packaging:

1,000 pcs. / 4.4 kg
3,000 pcs. / 12.6 kg

Assembling data:



Assembling data
(punching)

A = 7 mm (+/-1mm)
B = 13 mm (+/-1mm)
C = 110 mm (+/-1mm)



Did you already know that we can also manufacture our products from biological raw materials on request? We will be pleased to provide you with further information!

