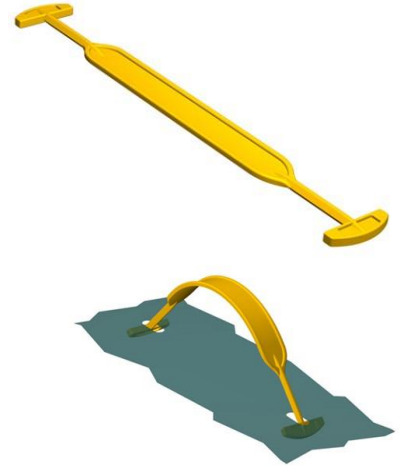




Data sheet EKS 169.0 Carrying handle

Our Carrying handle EKS 169.0

- offers high carrying comfort through its profiled middle part
- can also be combined with the reinforcing plates EKS 165.6, EKS 991.0 and reinforcing rings EKS 607.0
- can be loaded up to 12 kg or 22 kg depending on the material used
- is part of our E-K-S Bioline®
- 100% recyclable



Technical specification:

Weight approx. 4.10 gr.

Raw material depending on the variant:

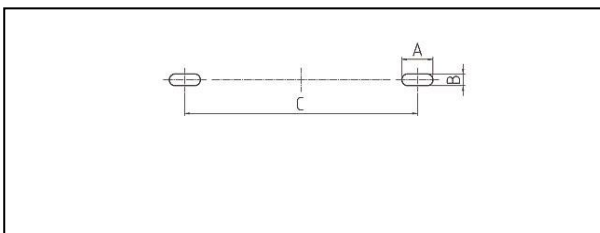
- 70% LDPE (standard material) / 30 % LDPE regranulate (PIR)
- 70% HDPE (standard material) / 30 % LDPE regranulate (PIR)
- 100% E-K-S Bioline® sugar cane

Packaging:

1,000 pcs. / 4.6 kg

4,000 pcs. / 16.8 kg

Assembling data:



Assembling data
(punching)

A = 17 mm (+/-1mm)

B = 6 mm (+/-1mm)

C = 135 mm (+/-1mm)



Did you already know that we can also manufacture our products from biological raw materials on request? We will be pleased to provide you with further information!

