



Data sheet

EKS 165.6 Reinforcing plate

Our Reinforcing plate EKS 165.6

- supports the cardboard box wall
- is preferably used with carrying handle EKS 169.0 and EKS 964.0
- is optimally suitable for cardboard boxes with thicknesses up to 6 mm
- can be purchased preassembled with Carrying handle EKS 169.0 as well as EKS 964.0 (EKS 166.1/2/5/6)
- is part of our E-K-S Bioline®
- 100% recyclable



Technical specification:

Weight approx. 9.10 gr.

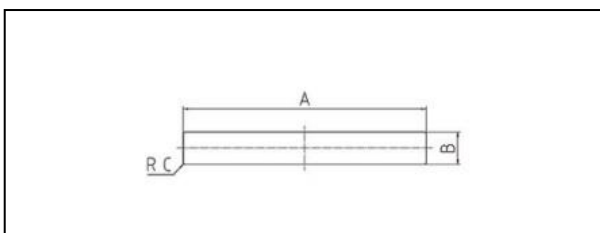
Raw material depending on the variant:

- 70% PS (standard material) / 30 % PS regranulate (PIR)
- 100% E-K-S® Bioline sugar cane

Packaging:

1.000 pcs. / 10,3 kg

Assembling data:



Assembling data
(punching)

A = 120 mm (+-1mm)
B = 16 mm (+-1mm)
C = 1 mm (+-1mm)



Did you already know that we can also manufacture our products from biological raw materials on request? We will be pleased to provide you with further information!

