

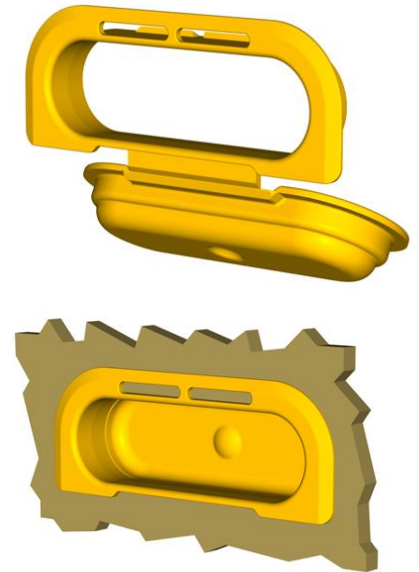


Data sheet

EKS 106.1 Hollow handle

Our Hollow handle EKS 106.1

- is suitable for cardboard boxes with wall thicknesses up to 4 mm
- prevents tearing the cardboard around the edges
- cannot be opened from the outside after mounting and avoids easy access to the inside of the closed package at the positions of the punchings
- is suitable for common hand hole punchings
- is mounted on two opposite sides
- a version for wall thicknesses up to 8 mm is available with the Hollow handle EKS 106.0
- is part of our E-K-S Bioline®
- 100% recyclable



Technical specification:

Weight approx. 25.50 gr.

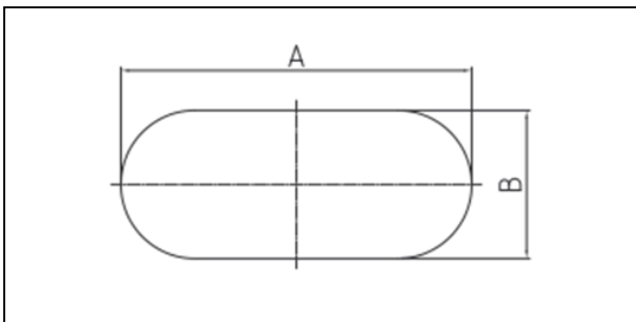
Raw material depending on the variant:

- 100% PP- Recycled material (PCR)
- 100% E-K-S Bioline® sugar cane

Packaging:

300 pcs. / 8.8 kg

Assembling data:



Assembling data
(punching)

A = 105 mm (+/-1mm)
B = 35 mm (+/-1mm)



Did you already know that we can also manufacture our products from biological raw materials on request? We will be pleased to provide you with further information!

