



## Data sheet EKS 106.0 Hollow handle

Our Hollow handle EKS 106.0

- is suitable for cardboard boxes with wall thicknesses up to 8 mm
- prevents tearing the cardboard around the edges
- cannot be opened from the outside after mounting and avoids easy access to the inside of the closed package at the positions of the punchings
- is suitable for common hand hole punchings
- is mounted on two opposite sides
- a version for wall thicknesses up to 4 mm is available with the Hollow handle EKS 106.1
- is an alternative to the Hand hole reinforcers EKS 211.0, EKS 999.0 and EKS 999.1
- is part of our E-K-S Bioline®
- 100% recyclable



### Technical specification:

Weight approx. 28.10 gr.

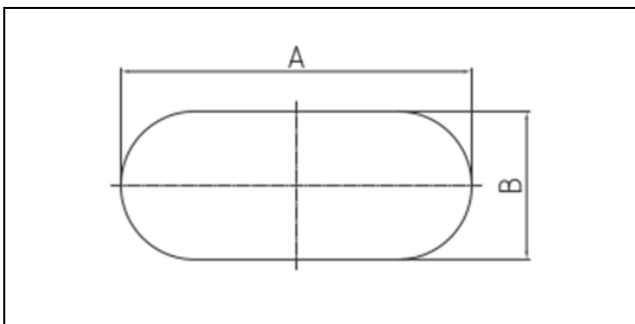
Raw material depending on the variant:

- 100% PP- Recycled material (PCR)
- 100% E-K-S Bioline® sugar cane

### Packaging:

250 pcs. / 8.1 kg

### Assembling data:



Assembling data  
(punching)

A = 105 mm (+/-1mm)  
B = 35 mm (+/-1mm)



Did you already know that we can also manufacture our products from biological raw materials on request? We will be pleased to provide you with further information!

